

## Aristel AN VP and SS VPA- Wired SLT Door Phone



AN VP  
Indoor Model



SS VPA  
IP65 Rated Outdoor Model

- Auto answers incoming calls.
- Supports PSTN, PBX - SLT and FXS connectivity. 24 – 48 v line powered.
- Disconnects on detecting busy tone or after 5 minutes.
- A call is initiated by pressing the call button. Press again to disconnect the call.
- Intercom call will disconnect if there is 30 seconds of silence.
- 10 phone numbers can be stored in the door station.
- The cadence and frequency of ring back tone and busy tone received by the door station can be manually programmed to match that of the PABX, PSTN or ATA.
- Easy to program with the inbuilt voice wizard assistant.
- A confirmation voice announcement is provided when programming.
- For elevator use with Aristel's intercom controller system, the door station has a 'no connection' detection feature.

### - Dimensions:

AN VP - 95mm (W) x 140MM (H) x 26MM (D)

SS VPA - 170mm (W) x 100mm (H)

---

# Options For SS VPA

## Door Latches & Power Adaptors



Aristel Door Latch

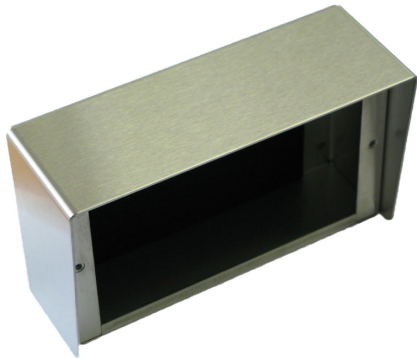
- Aristel LATCHPL - Power OFF to Release
- Aristel LATCH - Power ON to release

Latch Power Adaptor  
Suitable for LATCH & LATCHPL 240/12Volt  
DC1.5 Amp  
Switch Mode



---

## Surface Mount Cabinets



AN SMB Horizontal Stainless Steel Surface Mount Cabinet

Weather proof stainless steel surface mount.

Dimensions  
175 (W) x 105 (H) x 55 (D)

AN SMBV Vertical Stainless Steel Surface Mount Cabinet

Weather proof stainless steel surface mount.

Dimensions  
175 (H) x 105 (W) x 55 (D)

