

### Quick Installation Guide Ceiling Mount AP

#### 1/Product introduction

##### LED Indicator definition

One LED indicator	Designation	Normal Status	Explanation
SYSTEM LED	Green Light	System boots up successfully	
	Blue Light	WiFi boots up successfully	

Three LED indicator	Designation	Normal Status	Explanation
SYSTEM LED	Green	System boots up successfully	
LAN LED	Flashing	System reset default	
LAN LED	Flashing	LAN Wireless boots up successfully	
LAN LED	Flashing	LAN Wireless boots up successfully	

\*The number of LEDs for different models of ceiling mount AP will be different, please refer to the actual product.

##### Ports Definition

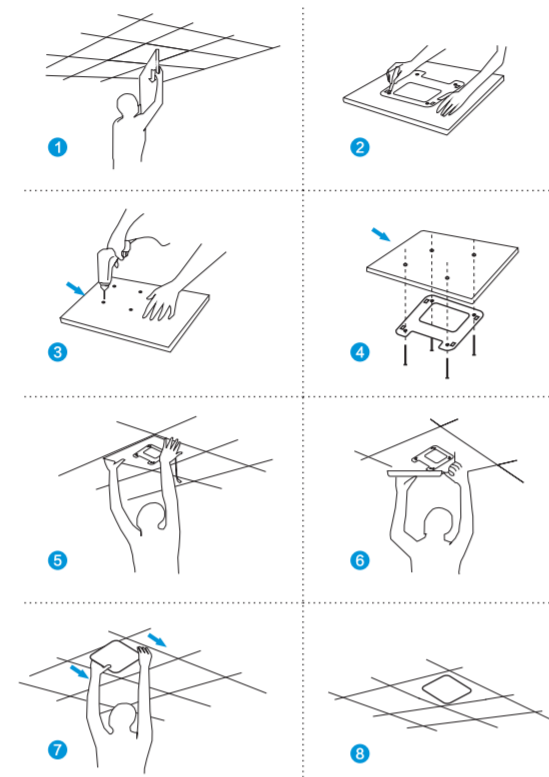
Ports & Buttons	Explanation
DC Switch	Power input port
USB Indicator	LED indicator which lights up when Ethernet cable is connected to Ethernet ports
Reset Button	Reset device to factory default settings, press for 10 seconds when power is on, device will be reset
WAN Port	Connect to internet through ADSL modem or FTTH terminal box. Under AP and repeater mode, WAN port will be changed to LAN port
LAN Port	LAN port can connect LAN device

\*The interface for different models of products may be different, the above diagram is only for reference, please refer to the actual product!

##### Operation environment

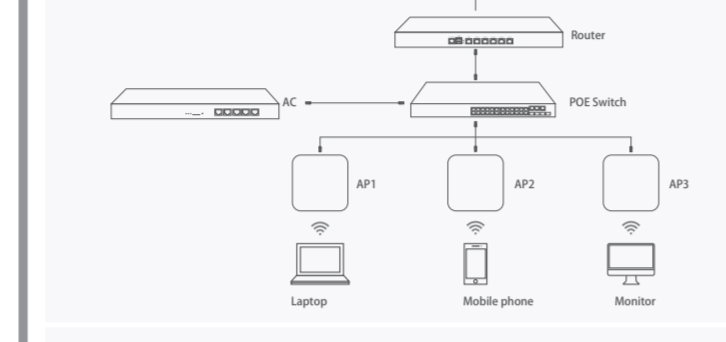


#### 2/Device installation

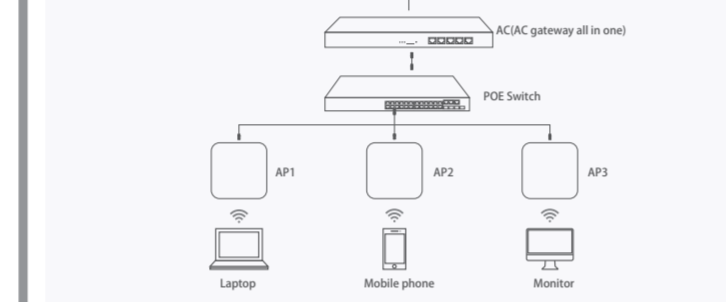


#### 3/Device connection

##### Bypass mode topology



##### AC Gateway mode topology

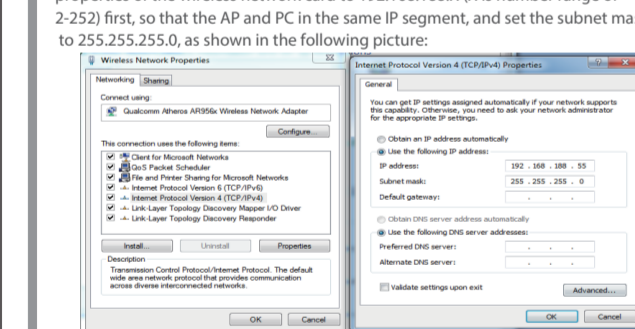


Tip: If the AP supports 24V POE, please use 24V POE switch or POE adapter; if the AP is a standard 48V POE device, please use a standard IEEE802.3at POE switch or POE adapter. When deploy a large wireless network, there are many APs in this network, it is recommended to use a wireless AC controller in the network to centralize manage all APs in the network.

#### 4/Device management

##### Management from WEB UI

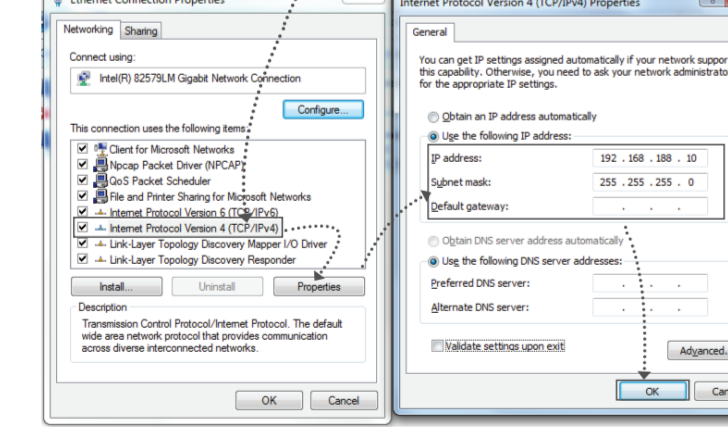
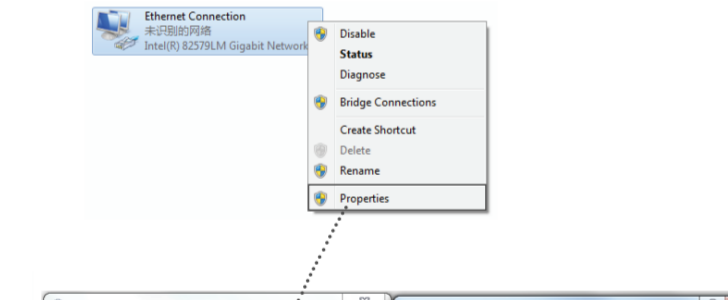
###### Connect PC by wireless



2). After setting the IP address of PC, connect PC with AP in wireless. Double-click "Wireless network connection", in the pop-up wireless SSID list, select "Wireless 2.4G", click "Connect", then enter the password in the pop-up password dialog box, the default password is "66666666", click "OK" to connect.

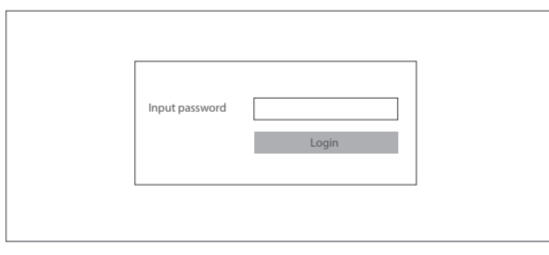
##### Connect PC by wired port

Using the wired connection, set the IP address of the TCP/IP properties of the wired network card to 192.168.188.X (X is number range of 2-252), and the PC will be the same IP segment as AP.

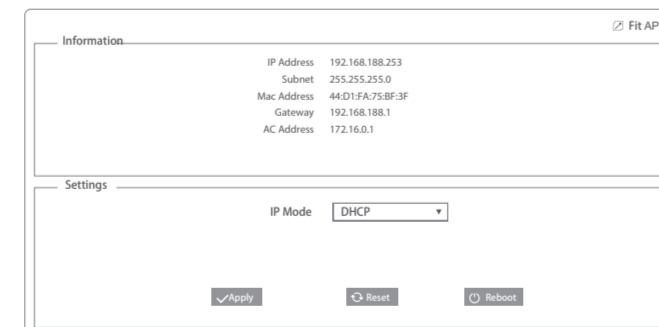


##### AP mode

1. Use Internet Explorer to visit http://192.168.188.253, pop up the login dialogue box shown in the following picture, input the default login password: admin, then press "Login" to enter the wireless APs management user interface page.



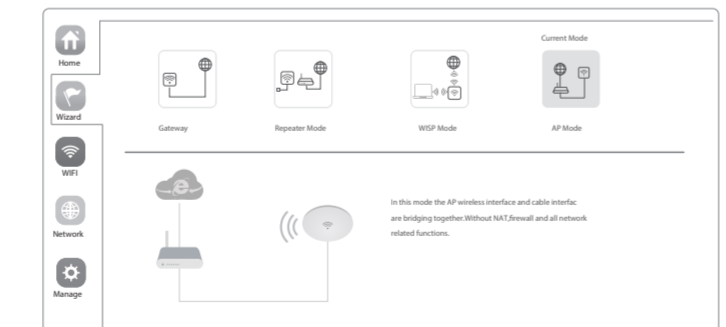
2. By default it is in Fat AP mode, users need click the button [Fat AP] at the right corner to change it to FAT AP mode if needed.



3. In FAT AP mode user interface home page is as shown below:



4. Setup Wizard page, choose AP mode as the current working mode.



#### 5/Use mobile phone to login

##### Use mobile phone to login

Mobile login web page of AP (default password is admin)

When mobile phone connect to AP through wireless, need to configure static IP according to below steps

1. How to set static IP for Android system mobile phone

Open the phone click "Settings", choose "WLAN", find and long press the SSID of the AP, pop-up menu select "Static IP", set a static IP 192.168.188.X (X can not be 253 or 252), then input gateway IP should be same IP segment as AP for mobile phone, then input the right Gateway IP, network mask and DNS.

2. How to set static IP for IOS system mobile phone

Click "Settings", choose "Wi-Fi", click exclamation mark (!) after connect wireless signal successfully, setup the static IP 192.168.188.X (X can not be 253 or 252), then input gateway IP, subnet mask and DNS, please note: the static IP should be in the same IP segment as AP.

#### Internet connection and status view

IP Settings: After the configuration is completed, the wireless AP will restart and enter the Operation Mode you set. Then change the IP address of your computer to obtain an IP address automatically, computer and other wireless devices can connect to the AP for internet access.

View status: Manually set a fixed IP address for your computer to 192.168.188.X (X is number range of 2-252), then login the wireless AP by its IP address, to enter the management user interface and view its status, as shown in the following picture.

##### Device Management

Users can backup, reboot and reset to factory default settings through device management menu options. Also you can modify the WEB login password, upgrade firmware, time synchronization and system log statistics and other functional settings as shown in picture below.

#### Wireless testing

1. Use Laptop or mobile phone to test whether the wireless network can surf the Internet, click wireless network, select the wireless SSID, enter the password to connect the wireless AP, test whether you can surf the Internet.

2. Check the status of the wireless network connection, signal quality, speed, Bytes sent and received. Click on Details, check if the IP address and DNS server address etc. obtained correctly, confirm that the device is working properly.

#### Other mode

Gateway Mode, Repeater Mode, WSP Mode, AP Mode

Gateway Mode: Realize router function, WAN port connect with modem (ADSL or Fiber), or WAN port connect internet by dynamic or static IP type.

Repeater mode: Realize wireless bridge and forwarding without compatibility matching with the upper device.

WSP Mode: Wireless ISP clients connect to the wireless base station by wireless, to realize local LAN internet connection sharing.

AP mode: Under AP mode, NAT, DHCP, firewall, and all WAN related functions are turned off, all wireless and wired interfaces are bridged together, no distinguishing between LAN and WAN.

Operation mode setup: Based on the Quick-Setup Wizard for each mode shown in the above picture. Set the parameters and options that user needs, and click Next step until the settings for each operation mode are completed.

FAQ and Solutions

Q1: Forget login name and password?  
A1: Reset to factory default settings: press the reset button for above 10 seconds and release it, the device will reboot and reset to factory default settings automatically.

Q2: Can not Login wireless AP management WEB Interface?  
A2: 1. Check if PC with static IP and if this IP is in the same IP segment of AP, make sure it is not set to other IP range.  
2. Reset AP to factory default settings and re-connect to AP.  
3. Make sure wireless AP IP address is 192.168.188.253 and not occupied by other devices.  
4. Check if there is something wrong with PC and Ethernet cable, recommended to use CAT 5e or above UTP cable.

Q3: Forget wireless network password?  
A3: 1. Connect AP by wired, login WEB management interface, click wireless settings -> basic settings -> encryption -> Password, and set a new password for wireless network.  
2. Reset AP to factory default settings, the default password is 66666666.

Q4: Can not obtain IP Address?  
A4: 1. In gateway or WSP mode, check if DHCP server is enabled.  
2. In repeater or AP mode, check if upper network connection is normal, or if LAN network DHCP server is working well.

Q5: How to change FAT AP to FAT AP?  
A5: Switch FAT and FIT mode by clicking the button [Fat AP] at right corner, then device will reboot. After rebooting, please clear history buffer files in IE and then login.  
NOTE: Once the device is switched to FAT AP mode, AC controller will not be able to manage and control it.

Q6: AC controller device list can not get AP devices?  
A6: The mode for AC controller and AP are different, AC controller with model prefixed AC is used to control FAT AP, the model prefixed in FAC or BW is used to control FIT AP.  
NOTE: All the APs support both FAT and FIT AP mode, the default mode is FIT AP mode.

\*This manual is only used for instructions and provides an accurate information as we can, but we can not make sure all the information in this manual is correct. This manual may be updated because of the products upgrade, we have the right to revise the manual without any notice.

尺寸：420X297mm  
双面印刷 有折位  
80g双胶书纸